

the inner workings  
**For perusal only**  
of a throat exposed

**visit**  
for viola and ensemble  
**[www.chriscresswellmusic.com](http://www.chriscresswellmusic.com)**

**to purchase**

Chris Cresswell

***the inner workings of a throat exposed (2016)***  
*for viola and orchestra*

*Written for Elsabe Raath and the Thallien Ensemble  
Premiered on December 11th, 2016 at the Bozar in Brussels, Belgium*

**Program Note:**

Written for solo viola and ensemble, *the inner workings of a throat exposed* was inspired in part by Monica Youn's poem, *Brownacre*.

*'...a shape that should have been an emblem  
of sufficiency, of calm, but whose surfaces*

**For perusal only**  
*are tearing, each a violent mass of horrid  
like the inner workings of a throat exposed, and*

*whose dimensions were expanding with shocking speed,  
accumulating mass, accumulating coherence...'*

**visit**

**[www.chrisresswellmusic.com](http://www.chrisresswellmusic.com)**

Find out more about Monica Youn's poetry at [www.monicayoun.com](http://www.monicayoun.com).

**to purchase**

**Instrumentation:**

solo viola

flute (piccolo)  
clarinet in Bb

trumpet  
**For perusal only**  
trombone

percussion  
**visit**

(kick drum, snare drum, glockenspiel, vibraphone,  
triangle, suspended cymbal)

**www.chriscrewellmusic.com**

electric guitar  
**to purchase**  
piano

2 violins  
viola  
cello

**For perusal only**

**visit**

**[www.chriscesswellmusic.com](http://www.chriscesswellmusic.com)**

**to purchase**

# the inner workings of a throat exposed

for viola and ensemble

Chris Cresswell

Dark, Aggressive ♩ = 136

Flute

Clarinet in B $\flat$

Trumpet in C

Trombone

Pitched Percussion

Non-Pitched Percussion

kick drum *pp* discreet, underscoring the viola

Piano

Electric Guitar

Solo Viola

use overpressure techniques as a way of phrasing gestures

*n. < ff* *f* *n. < ff* *n. < ff* *p* *n. < ff* *n. < ff* *mf* *f* <

Violin I

Violin II

Viola

Cello

For perusal only

visit

[www.chriscresswellmusic.com](http://www.chriscresswellmusic.com)

to purchase

Fl.

B♭ Cl.

C Tpt.

Tbn.

Pitched Perc.

Perc.

Pno.

E.Gtr.

S Vla.

Vln. I

Vln. II

Vla.

Vc.

*mf sffpz* *f* *f* *p*

For perusal only

visit

[www.chrisresswellmusic.com](http://www.chrisresswellmusic.com)

to purchase

21

Fl.

B♭ Cl.

C Tpt.

Tbn.

Pitched Perc.

Perc. triangle kick drum

Pno.

E.Gtr.

S Vla.

Vln. I

Vln. II

Vla.

Vc.

*pp* *p* *ff* *p* *f* *mf* *ff*

softer, lyrical aggressive

let ring *8va*

visit [www.chrisresswellmusic.com](http://www.chrisresswellmusic.com) to purchase

4

Fl.

B♭ Cl.

C Tpt.

Tbn.

Pitched Perc.

Perc.

Pno.

E.Gtr.

S Vla.

Vln. I

Vln. II

Vla.

Vc.

30

triangle

*p*

softer, lyrical

*pp*

aggressive

*f*

*sfppz*

For perusal only

visit

[www.chrisresswellmusic.com](http://www.chrisresswellmusic.com)

to purchase



38

Fl.

B♭ Cl.

C Tpt.

Tbn.

Pitched Perc.

Perc.

Pno.

E.Gtr.

S Vla.

Vln. I

Vln. II

Vla.

Vc.

*ff*

*sffpz < ff*

*f*

*sffpz < ff*

*mf*

*sffpz < ff*

*p*

**For perusal only**

**visit**

**www.chriscrosswellmusic.com**

**to purchase**

6

47

Fl.

B♭ Cl.

C Tpt.

Tbn.

Pitched Perc.

Perc.

Pno.

E.Gtr.

S Vla.

Vln. I

Vln. II

Vla.

Vc.

**For perusal only**

**visit**

**www.chrisresswellmusic.com**

**to purchase**

55  
Fl.

55  
B $\flat$  Cl.

55  
C Tpt.

55  
Tbn.

55  
Pitched Perc.

55  
Perc.

55  
Pno.

55  
E.Gtr.

55  
S Vla.  
snap pizz arco  
*ff* *fff* *p* *sfz*

55  
Vln. I

55  
Vln. II

55  
Vla.

55  
Vc.

For perusal only

visit

[www.chrisresswellmusic.com](http://www.chrisresswellmusic.com)

to purchase

Fl.



B♭ Cl.



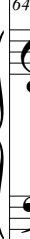
C Tpt.



Tbn.



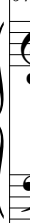
Pitched Perc.



Perc.



Pno.



E.Gtr.



S Vla.



Vln. I



Vln. II



Vla.



Vc.



**For perusal only**  
 visit  
[www.chrisresswellmusic.com](http://www.chrisresswellmusic.com)  
 to purchase

softer, lyrical

aggressive

*p*

*f*

8<sup>va</sup>

**For perusal only**

**visit**

**www.chrisresswellmusic.com**

**to purchase**

73  
Fl.

73  
B♭ Cl.

73  
C Tpt.

73  
Tbn.

73  
Pitched Perc.

73  
Perc.

73  
Pno.

73  
E.Gtr.

73  
S Vla.

73  
Vln. I

73  
Vln. II

73  
Vla.

73  
Vc.

For perusal only  
visit  
[www.chrisresswellmusic.com](http://www.chrisresswellmusic.com)  
to purchase

Fl.

79 Musical staff for Flute, measures 79-82, 3/4 time signature.

B $\flat$  Cl.

Musical staff for B-flat Clarinet, measures 79-82, 3/4 time signature.

C Tpt.

79 Musical staff for C Trumpet, measures 79-82, 3/4 time signature.

Tbn.

Musical staff for Trombone, measures 79-82, 3/4 time signature.

Pitched Perc.

79 Musical staff for Pitched Percussion, measures 79-82, 3/4 time signature.

Perc.

79 Musical staff for Percussion, measures 79-82, 3/4 time signature. Includes a *mf* dynamic marking.

Pno.

79 Musical staff for Piano, measures 79-82, 3/4 time signature.

E.Gtr.

79 Musical staff for Electric Guitar, measures 79-82, 3/4 time signature.

S Vla.

79 Musical staff for Solo Violin, measures 79-82, 3/4 time signature. Includes triplets and slurs.

Vln. I

Musical staff for Violin I, measures 79-82, 3/4 time signature.

Vln. II

Musical staff for Violin II, measures 79-82, 3/4 time signature.

Vla.

Musical staff for Viola, measures 79-82, 3/4 time signature.

Vc.

Musical staff for Violoncello, measures 79-82, 3/4 time signature.

For perusal only

visit

[www.chrisresswellmusic.com](http://www.chrisresswellmusic.com)

to purchase

Musical score for a symphony orchestra, page 11. The score includes parts for Flute (Fl.), B-flat Clarinet (B♭ Cl.), C Trumpet (C Tpt.), Trombone (Tbn.), Pitched Percussion (Pitched Perc.), Percussion (Perc.), Piano (Pno.), Electric Guitar (E.Gtr.), Solo Viola (S Vla.), Violin I (Vln. I), Violin II (Vln. II), Viola (Vla.), and Violoncello (Vc.). The score is divided into measures 83 to 88. The time signature is 3/4, with a key signature of one flat. The Solo Viola part has detailed notation including triplets, accents, and performance instructions like 'snap pizz', 'arco', and 'subito p'. A large red watermark is overlaid on the score: 'For perusal only visit www.chriscesswellmusic.com to purchase'.

A

very quiet, supporting the viola

12

89

Fl.

*pp*

very quiet, supporting the viola

*pp*

B♭ Cl.

C Tpt.

89

very quiet, supporting the viola

*pp*

Tbn.

Pitched Perc.

89

suspended cymbal with brushes

Perc.

89

*p* For perusal only

Pno.

visit

[www.chrisresswellmusic.com](http://www.chrisresswellmusic.com)

E.Gtr.

89

to purchase

S Vla.

89

softer, lyrical

*ff*

*f*

*ff*

*p*

Vln. I

Vln. II

Vla.

Vc.



103

Fl.

B♭ Cl.

C Tpt.

Tbn.

Pitched Perc.

Perc. triangle *p*

Pno. *(8va)*

E.Gtr.

S Vla. *pp* *aggressive* *n.* *ff* *mf* *f* *ff* *mf* *3*

Vln. I

Vln. II

Vla.

Vc.

**For perusal only**

**visit**

**www.chriscresswellmusic.com**

**to purchase**

Fl.

114

Musical staff for Flute (Fl.) with a treble clef. The staff contains rests for the first three measures. The time signature changes from 3/4 to 4/4 in the fourth measure. The staff continues with rests for the fifth and sixth measures.

B♭ Cl.

Musical staff for B♭ Clarinet (B♭ Cl.) with a treble clef. The staff contains rests for the first three measures. The time signature changes from 3/4 to 4/4 in the fourth measure. The staff continues with rests for the fifth and sixth measures.

C Tpt.

114

Musical staff for C Trumpet (C Tpt.) with a treble clef. The staff contains rests for the first three measures. The time signature changes from 3/4 to 4/4 in the fourth measure. The staff continues with rests for the fifth and sixth measures.

Tbn.

Musical staff for Trombone (Tbn.) with a bass clef. The staff contains rests for the first three measures. The time signature changes from 3/4 to 4/4 in the fourth measure. The staff continues with rests for the fifth and sixth measures.

Pitched Perc.

114

Musical staff for Pitched Percussion (Pitched Perc.) with a treble clef. The staff contains rests for the first three measures. The time signature changes from 3/4 to 4/4 in the fourth measure. The staff continues with rests for the fifth and sixth measures.

Perc.

114

Musical staff for Percussion (Perc.) with a percussion clef. The staff contains rests for the first three measures. The time signature changes from 3/4 to 4/4 in the fourth measure. In the fifth measure, there is a note with an accent and a dynamic marking of *mf*. The staff continues with rests for the sixth measure.

Pno.

114

Musical staff for Piano (Pno.) with a treble clef. The staff contains rests for the first three measures. The time signature changes from 3/4 to 4/4 in the fourth measure. The staff continues with rests for the fifth and sixth measures.

E.Gtr.

114

Musical staff for Electric Guitar (E.Gtr.) with a treble clef. The staff contains rests for the first three measures. The time signature changes from 3/4 to 4/4 in the fourth measure. The staff continues with rests for the fifth and sixth measures.

S Vla.

114

Musical staff for Solo Viola (S Vla.) with an alto clef. The staff contains a melodic line starting with a triplet of eighth notes, followed by a half note, and then a series of eighth notes with accents. The time signature changes from 3/4 to 4/4 in the fourth measure. The staff continues with a complex rhythmic pattern including a quintuplet and a triplet. A dynamic marking of *ff* is present.

Vln. I

Musical staff for Violin I (Vln. I) with a treble clef. The staff contains rests for the first three measures. The time signature changes from 3/4 to 4/4 in the fourth measure. The staff continues with rests for the fifth and sixth measures.

Vln. II

Musical staff for Violin II (Vln. II) with a treble clef. The staff contains rests for the first three measures. The time signature changes from 3/4 to 4/4 in the fourth measure. The staff continues with rests for the fifth and sixth measures.

Vla.

Musical staff for Viola (Vla.) with an alto clef. The staff contains rests for the first three measures. The time signature changes from 3/4 to 4/4 in the fourth measure. The staff continues with rests for the fifth and sixth measures.

Vc.

Musical staff for Violoncello (Vc.) with a bass clef. The staff contains rests for the first three measures. The time signature changes from 3/4 to 4/4 in the fourth measure. The staff continues with rests for the fifth and sixth measures.

For perusal only

visit

[www.chrisresswellmusic.com](http://www.chrisresswellmusic.com)

to purchase

119

Fl.

B $\flat$  Cl.

C Tpt.

Tbn.

Pitched Perc.

Perc.

Pno.

E.Gtr.

S Vla.

Vln. I

Vln. II

Vla.

Vc.

3/4

4/4

5

3

3

3

5

5

**For perusal only**

**visit**

**[www.chrisresswellmusic.com](http://www.chrisresswellmusic.com)**

**to purchase**

123

Fl.

B♭ Cl.

C Tpt.

Tbn.

Pitched Perc.

Perc.

Pno.

E.Gtr.

S Vla.

Vln. I

Vln. II

Vla.

Vc.

**For perusal only**

**visit**

**www.chrisresswellmusic.com**

**to purchase**

*f*

*mf*

*f*

*sffp*

*ff*

*sffp*

*f*

*ff*

131

Fl.

B $\flat$  Cl.

C Tpt.

Tbn.

Pitched Perc.

Perc.

Pno.

E.Gtr.

S Vla.

Vln. I

Vln. II

Vla.

Vc.

*mf*

*f*

*ff*

*f*

**For perusal only**

**visit**

**[www.chrisresswellmusic.com](http://www.chrisresswellmusic.com)**

**to purchase**

Fl.

Musical staff for Flute (Fl.) with measure numbers 137 and 138, and a 3/4 time signature.

B♭ Cl.

Musical staff for B-flat Clarinet (B♭ Cl.) with measure numbers 137 and 138, and a 3/4 time signature.

C Tpt.

Musical staff for C Trumpet (C Tpt.) with measure numbers 137 and 138, and a 3/4 time signature.

Tbn.

Musical staff for Trombone (Tbn.) with measure numbers 137 and 138, and a 3/4 time signature.

Pitched Perc.

Musical staff for Pitched Percussion (Pitched Perc.) with measure numbers 137 and 138, and a 3/4 time signature.

Perc.

Musical staff for Percussion (Perc.) with measure numbers 137 and 138, and a 3/4 time signature.

Pno.

Musical staff for Piano (Pno.) with measure numbers 137 and 138, and a 3/4 time signature.

E.Gtr.

Musical staff for Electric Guitar (E.Gtr.) with measure numbers 137 and 138, and a 3/4 time signature.

S Vla.

Musical staff for Soprano Viola (S Vla.) with measure numbers 137 and 138, and a 3/4 time signature.

Vln. I

Musical staff for Violin I (Vln. I) with measure numbers 137 and 138, and a 3/4 time signature.

Vln. II

Musical staff for Violin II (Vln. II) with measure numbers 137 and 138, and a 3/4 time signature.

Vla.

Musical staff for Viola (Vla.) with measure numbers 137 and 138, and a 3/4 time signature.

Vc.

Musical staff for Violoncello (Vc.) with measure numbers 137 and 138, and a 3/4 time signature.

For perusal only

visit

[www.chriscrosswellmusic.com](http://www.chriscrosswellmusic.com)

to purchase

142

Fl.

B♭ Cl.

C Tpt.

Tbn.

Pitched Perc.

Perc.

Pno.

E.Gtr.

S Vla.

Vln. I

Vln. II

Vla.

Vc.

harmon mute, stem out

*mf*

*f*

*f*

overpressure to the point of noise

*f*

*ff*

**For perusal only**

**visit**

**www.chriscresswellmusic.com**

**to purchase**

Fl.

B♭ Cl.

C Tpt.

Tbn.

Pitched Perc.

Perc.

Pno.

E.Gtr.

S Vla.

Vln. I

Vln. II

Vla.

Vc.

**For perusal only**

**visit**

**[www.chrisresswellmusic.com](http://www.chrisresswellmusic.com)**

**to purchase**



C

FL. *sffpz* *f* *sffpz* *f*

B♭ Cl. *sffpz* *f* *sffpz* *f*

C Tpt. *sffpz* *f* *sffpz* *f*

Tbn. *sffpz* *f* *sffpz* *f*

Pitched Perc.

Perc. *f* *ff*

Pno. *f*

E.Gtr. *f* with distortion on D and B string

S Vla. *ff* as high as possible

Vln. I *sffpz* *f*

Vln. II *sffpz* *f*

Vla. *sffpz* *f*

Vc. *sffpz* *f*

For perusal only

visit

[www.chrisresswellmusic.com](http://www.chrisresswellmusic.com)

to purchase



166 *f* *sffp<sub>z</sub>* *f* *8<sup>va</sup>*

Fl.

*f* *sffp<sub>z</sub>* *f* *8<sup>va</sup>*

B $\flat$  Cl.

166 *f* *sffp<sub>z</sub>* *f* *8<sup>va</sup>*

C Tpt.

*f* *sffp<sub>z</sub>* *f* *8<sup>va</sup>*

Tbn.

166

Pitched Perc.

166

Perc.

166

Pno.

166 *f* *sffp<sub>z</sub>* *f* *8<sup>va</sup>*

E.Gtr.

on D and B string

166

S Vla.

166 *f* *sffp<sub>z</sub>* *f* *8<sup>va</sup>*

Vln. I

166 *f* *sffp<sub>z</sub>* *f* *8<sup>va</sup>*

Vln. II

166 *f* *sffp<sub>z</sub>* *f* *8<sup>va</sup>*

Vla.

166 *f* *sffp<sub>z</sub>* *f* *8<sup>va</sup>*

Vc.

**For perusal only**

**visit** \*

**www.chrisresswellmusic.com**

**to purchase**

24 *8va*-----D-----

Fl. *173*

B♭ Cl. *173*

C Tpt. *173*

Tbn. *173*

Pitched Perc. *173*

Perc. *173*

Pno. *173*

E.Gtr. *173*

S Vla. *173* *aggressive, guttural*

Vln. I *173*

Vln. II *173*

Vla. *173*

Vc. *173*

**For perusal only**

**visit**

**[www.chriscresswellmusic.com](http://www.chriscresswellmusic.com)**

**to purchase**

176

Fl.

B $\flat$  Cl.

C Tpt.

Tbn.

Pitched Perc.

Perc.

Pno.

E.Gtr.

S Vla.

Vln. I

Vln. II

Vla.

Vc.

**For perusal only**

**visit**

**[www.chrisresswellmusic.com](http://www.chrisresswellmusic.com)**

**to purchase**

Fl.

B $\flat$  Cl.

C Tpt.

Tbn.

Pitched Perc.

Perc.

Pno.

E.Gtr.

S Vla.

Vln. I

Vln. II

Vla.

Vc.

**For perusal only**

**visit**

**[www.chriscrosswellmusic.com](http://www.chriscrosswellmusic.com)**

**to purchase**



28 (8va)  
187

Fl.

B♭ Cl.

C Tpt.

Tbn.

Pitched Perc.

Perc.

Pno.

E.Gtr.

S Vla.

Vln. I

Vln. II

Vla.

Vc.

*ffpz*

*f*

*f*

solo

3

3

3

3

3

3

6

6

3

3

3

**For perusal only**

**visit**

**[www.chrisresswellmusic.com](http://www.chrisresswellmusic.com)**

**to purchase**



This musical score page includes parts for Flute (Fl.), B♭ Clarinet (B♭ Cl.), C Trumpet (C Tpt.), Trombone (Tbn.), Pitched Percussion (Pitched Perc.), Percussion (Perc.), Piano (Pno.), Electric Guitar (E.Gtr.), Viola (S Vla.), Violin I (Vln. I), Violin II (Vln. II), Viola (Vla.), and Violoncello (Vc.). The score is divided into measures starting at 189. The Flute and Trombone parts feature triplet markings. The Percussion part has a complex rhythmic pattern with accents and slurs. The Piano part includes dynamic markings of *f* and *ff*. The Electric Guitar part has a specific instruction: "pitch bend the D# so that it is in and out of tune with the E". The Violin I part features a dense sixteenth-note texture with sixteenth-note slurs. The Violin II, Viola, and Vc. parts have triplet markings.

For perusal only  
visit  
[www.chriscrosswellmusic.com](http://www.chriscrosswellmusic.com)

to purchase

30

Fl.

Musical staff for Flute (Fl.) with a whole rest.

B♭ Cl.

Musical staff for B♭ Clarinet (B♭ Cl.) with notes, dynamics *mf* and *f*, and a triplet.

(with solo viola, quieter than solo viola)

C Tpt.

Musical staff for Cornet (C Tpt.) with a whole rest.

Tbn.

Musical staff for Trombone (Tbn.) with a whole rest.

Pitched Perc.

Musical staff for Pitched Percussion (Pitched Perc.) with a whole rest.

Perc.

Musical staff for Percussion (Perc.) with a rhythmic pattern.

Pno.

Musical staff for Piano (Pno.) with a whole rest.

For perusal only

visit

[www.chrisresswellmusic.com](http://www.chrisresswellmusic.com)

E.Gtr.

Musical staff for Electric Guitar (E.Gtr.) with a whole rest.

S Vla.

Musical staff for Solo Viola (S Vla.) with notes, dynamics *f*, and a triplet.

overpressure to the point of noise

to purchase

Vln. I

Musical staff for Violin I (Vln. I) with a whole rest.

Vln. II

Musical staff for Violin II (Vln. II) with a whole rest.

Vla.

Musical staff for Viola (Vla.) with a whole rest.

Vc.

Musical staff for Violoncello (Vc.) with a whole rest.

**F** *8va*  
 Fl. *f*  
 B $\flat$  Cl. *f*  
 C Tpt. *197* *sfppz* *f*  
 Tbn. *f*  
 Pitched Perc.  
 Perc. *197* *f*  
 Pno. *197*  
 E.Gtr. *197*  
 S Vla. *197*  
 Vln. I *f*  
 Vln. II *f*  
 Vla. *f*  
 Vc. *f*

For perusal only  
 visit  
[www.chriscrosswellmusic.com](http://www.chriscrosswellmusic.com)  
 to purchase

32 (8va)  
199

Fl.

B $\flat$  Cl.

C Tpt.

Tbn.

Pitched Perc.

Perc.

Pno.

E.Gtr.

S Vla.

Vln. I

Vln. II

Vla.

Vc.

*sffp $z$*

*f*

*solo*

*f*

**For perusal only**

**visit**

**[www.chrisresswellmusic.com](http://www.chrisresswellmusic.com)**

**to purchase**

Detailed description: This image shows a page of a musical score for a symphony orchestra. The score includes parts for Flute (Fl.), B-flat Clarinet (B $\flat$  Cl.), C Trumpet (C Tpt.), Trombone (Tbn.), Pitched Percussion (Pitched Perc.), Percussion (Perc.), Piano (Pno.), Electric Guitar (E.Gtr.), Solo Viola (S Vla.), Violin I (Vln. I), Violin II (Vln. II), Viola (Vla.), and Violoncello (Vc.). The score is divided into two systems. The first system starts at measure 32 (8va) and measure 199. The second system starts at measure 199. The score contains various musical notations, including triplets, slurs, and dynamic markings such as *sffp $z$*  and *f*. A large red watermark is overlaid on the score, reading "For perusal only", "visit", "www.chrisresswellmusic.com", and "to purchase".

201 <sup>(8va)</sup> Fl. *sfppz* *f*

B $\flat$  Cl.

201 C Tpt. *sfppz* *f*

Tbn.

Pitched Perc.

201 Perc.

201 Pno. *ff*

201 E.Gtr. pitch bend the D# so that it is in and out of tune with the E

201 S Vla. *f* aggressive, guttural

Vln. I

Vln. II

Vla.

Vc.

For perusal only  
 visit  
[www.chrisresswellmusic.com](http://www.chrisresswellmusic.com)  
 to purchase

34  
204

Fl.

B $\flat$  Cl.

204

C Tpt.

Tbn.

204

Pitched Perc.

204

Perc.

204

Pno.

204

E.Gtr.

204

S Vla.

Vln. I

Vln. II

Vla.

Vc.

*f*

*f*

*f*

*f*

*f*

*f*

*f*

*f*

*f*

aggressive, guttural

*f*

aggressive, guttural

*f*

*f*

*f*

**For perusal only**

**visit**

**[www.chriscrewellmusic.com](http://www.chriscrewellmusic.com)**

**to purchase**

207

Fl.

B $\flat$  Cl.

207

C Tpt.

*f*

3

3

3

Tbn.

*f*

3

3

3

207

Pitched Perc.

*f*

5

7

207

Perc.

3

3

3

3

207

Pno.

207

E.Gtr.

207

S Vla.

207

Vln. I

5

Vln. II

5

5

Vla.

5

Vc.

**For perusal only**

**visit**

**[www.chrisresswellmusic.com](http://www.chrisresswellmusic.com)**

**to purchase**

209

Fl.

B $\flat$  Cl.

C Tpt.

Tbn.

Pitched Perc.

Perc.

Pno.

E.Gtr.

S Vla.

Vln. I

Vln. II

Vla.

Vc.

**For perusal only**

**visit**

**[www.chriscrosswellmusic.com](http://www.chriscrosswellmusic.com)**

**to purchase**

aggressive, guttural

*f*



① *8va*

Fl. *f*

B $\flat$  Cl. *f*

C Tpt. *sffp $\text{z}$*  *f*

Tbn. *f*

Pitched Perc.

Perc. *3*

Pno.

E.Gtr.

S Vla.

Vln. I *6*

Vln. II *3*

Vla. *3*

Vc. *3*

**For perusal only**

**visit**

**[www.chriscrosswellmusic.com](http://www.chriscrosswellmusic.com)**

**to purchase**

38 (8va)  
214  
Fl.  
214  
B $\flat$  Cl.  
214  
C Tpt.  
214  
Tbn.  
214  
Perc.  
214  
Pno.  
214  
E.Gtr. solo  
214  
S Vla.  
214  
Vln. I  
214  
Vln. II  
214  
Vla.  
214  
Vc.

*sfppz* *f*

**For perusal only**

**visit**

**[www.chrisresswellmusic.com](http://www.chrisresswellmusic.com)**

**to purchase**

216 (8va) Fl.

B♭ Cl.

C Tpt.

Tbn.

Pitched Perc.

Perc.

Pno.

E.Gtr.

S Vla.

Vln. I

Vln. II

Vla.

Vc.

*sffpz*

*sffpz*

*ff*

pitch bend the D# so that it is in and out of tune with the E

**For perusal only**

**visit**

**www.chrisresswellmusic.com**

**to purchase**

This musical score page contains staves for the following instruments: Fl., B♭ Cl., C Tpt., Tbn., Pitched Perc., Perc., Pno., E.Gtr., S Vla., Vln. I, Vln. II, Vla., and Vc. The score includes dynamic markings such as *sffpz* and *f*, and articulation marks like accents and breath marks. A large red watermark is centered over the score.

For perusal only

visit

[www.chrisresswellmusic.com](http://www.chrisresswellmusic.com)

to purchase

223 *8va*

Fl.

B $\flat$  Cl.

C Tpt.

Tbn.

Pitched Perc.

Perc.

Pno.

E.Gtr.

S Vla.

Vln. I

Vln. II

Vla.

Vc.

**For perusal only**

**visit**

**[www.chrisresswellmusic.com](http://www.chrisresswellmusic.com)**

**to purchase**

Fl.

B♭ Cl.

C Tpt.

Tbn.

Pitched Perc.

Perc.

Pno.

E.Gtr.

S Vla.

Vln. I

Vln. II

Vla.

Vc.

**For perusal only**

**visit**

**[www.chriscrosswellmusic.com](http://www.chriscrosswellmusic.com)**

**to purchase**

231

Fl.

*sfppz* *f*

B♭ Cl.

*sfppz* *f*

C Tpt.

*sfppz* *f*

Tbn.

*sfppz* *f*

Pitched Perc.

Perc.

231

Pno.

E.Gtr.

231

S Vla.

Vln. I

*sfppz* *f*

Vln. II

*sfppz* *f*

Vla.

*sfppz* *f*

Vc.

*sfppz* *f*

**For perusal only**

**visit**

**[www.chrisresswellmusic.com](http://www.chrisresswellmusic.com)**

**to purchase**

Fl.

B♭ Cl.

C Tpt.

Tbn.

Pitched Perc.

Perc.

Pno.

E.Gtr.

S Vla.

Vln. I

Vln. II

Vla.

Vc.

For perusal only

visit

[www.chrisresswellmusic.com](http://www.chrisresswellmusic.com)

to purchase





Musical score for various instruments including Flute (Fl.), B♭ Clarinet (B♭ Cl.), C Trumpet (C Tpt.), Trombone (Tbn.), Pitched Percussion (Pitched Perc.), Percussion (Perc.), Piano (Pno.), Electric Guitar (E.Gtr.), Viola (Vla.), Violin I (Vln. I), Violin II (Vln. II), and Cello (Vc.). The score includes measures 243-246 and features various musical notations such as triplets, accents, and slurs.

**For perusal only**

**visit**

**[www.chriscrosswellmusic.com](http://www.chriscrosswellmusic.com)**

**to purchase**

FL. *3*

B $\flat$  Cl. *3*

C Tpt. *ff* *ffpz* *f*

Tbn.

Pitched Perc.

Perc. *3*

Pno.

E.Gtr.

S Vla. *3*

Vln. I *f* *aggressive, guttural* *5*

Vln. II *f* *aggressive, guttural* *5*

Vla. *3*

Vc. *3*

**For perusal only**

**visit**

**[www.chriscrewellmusic.com](http://www.chriscrewellmusic.com)**

**to purchase**

48

Fl.

B♭ Cl.

C Tpt.

Tbn.

Pitched Perc.

Perc.

Pno.

E.Gtr.

S Vla.

Vln. I

Vln. II

Vla.

Vc.

For perusal only

visit

www.chriscresswellmusic.com

to purchase

252

Fl.

B $\flat$  Cl.

C Tpt.

Tbn.

Pitched Perc.

Perc.

Pno.

E.Gtr.

S Vla.

Vln. I

Vln. II

Vla.

Vc.

**For perusal only**

**visit**

**[www.chriscrosswellmusic.com](http://www.chriscrosswellmusic.com)**

**to purchase**

*fff*

Fl.

B♭ Cl.

C Tpt.

Tbn.

Pitched Perc.

Perc.

Pno.

E.Gtr.

S Vla.

Vln. I

Vln. II

Vla.

Vc.

**For perusal only**

**visit**

**[www.chrisresswellmusic.com](http://www.chrisresswellmusic.com)**

**to purchase**

The image shows a page of a musical score for page 51. The score includes parts for Flute (Fl.), B-flat Clarinet (B♭ Cl.), C Trumpet (C Tpt.), Trombone (Tbn.), Pitched Percussion (Pitched Perc.), Percussion (Perc.), Piano (Pno.), Electric Guitar (E.Gtr.), Viola (S Vla.), Violin I (Vln. I), Violin II (Vln. II), Viola (Vla.), and Cello (Vc.). The score is in 3/4 and 4/4 time signatures. Key musical elements include:

- Measures 259-264 for most instruments, with some starting at measure 260.
- Flute and Clarinet parts are mostly rests.
- C Trumpet part starts at measure 259 with a dynamic of *sffp* and a breath mark, then moves to *fff* at measure 260.
- Piano part features clusters and triplets (marked '3') starting at measure 259.
- Electric Guitar part is marked 'on D and B string' and features a tremolo effect.
- String parts (Viola, Violin I, Violin II, Viola, Cello) enter at measure 260 with a dynamic of *ff* and are marked 'as high as possible'.

For perusal only

visit

[www.chrisresswellmusic.com](http://www.chrisresswellmusic.com)

to purchase





270 (8<sup>va</sup>)

Fl.

B♭ Cl.

270

C Tpt.

Tbn.

270

Pitched Perc.

270

Perc.

270

Pno.

clusters

ff

on D and B string

270

E.Gtr.

270

S Vla.

270

Vln. I

Vln. II

Vla.

Vc.

For perusal only

visit

[www.chrisresswellmusic.com](http://www.chrisresswellmusic.com)

to purchase

Fl. B♭ Cl. C Tpt. Tbn. Musical notation for woodwinds and brass, featuring 4/4 time signature and triplet markings.

C Tpt. Tbn. Musical notation for trumpets and trombones, continuing the rhythmic pattern.

Pitched Perc. Musical notation for pitched percussion instruments, showing rests.

Perc. Musical notation for unpitched percussion, featuring a complex rhythmic pattern with accents and triplet markings.

Pno. Musical notation for piano, featuring a dense texture with triplet markings.

E.Gtr. Musical notation for electric guitar, featuring a rhythmic pattern with triplet markings.

high, aggressive gesture to be worked out with Elsabe

S Vla. Vln. I Vln. II Vla. Vc. Musical notation for strings, including viola, violin I, violin II, viola, and cello, with various rhythmic markings.

For perusal only visit www.chriscrewellmusic.com

to purchase

279 (8va) Fl. 5 6 5 6 3/4 4/4

279 B♭ Cl. 5 6 5 6 3/4 4/4

279 C Tpt. 5 6 5 6 3/4 4/4

279 Tbn. 5 6 5 6 3/4 4/4

279 Pitched Perc. 15<sup>ma</sup> glockenspiel let ring *ff* 3/4 4/4

279 Perc. kick drum *sfz* 3/4 4/4

279 Pno. 5 6 5 6 *ff* 15<sup>ma</sup> 3/4 4/4

279 E.Gtr. 5 6 5 6 3/4 4/4

279 S Vla. 3/4 4/4

279 Vln. I 5 6 5 6 3/4 4/4

279 Vln. II 5 6 5 6 3/4 4/4

279 Vla. 5 6 5 6 3/4 4/4

279 Vc. 5 6 5 6 3/4 4/4

For perusal only  
 visit  
[www.chrisresswellmusic.com](http://www.chrisresswellmusic.com)

to purchase

56 (8<sup>va</sup>)-----

282

Fl.

B♭ Cl.

282

C Tpt.

Tbn.

(15<sup>ma</sup>)-----

Pitched Perc.

282

Perc.

282

Pno.

282

E.Gtr.

282

S Vla.

Vln. I

Vln. II

Vla.

Vc.

For perusal only

visit

[www.chrisresswellmusic.com](http://www.chrisresswellmusic.com)

to purchase

Fl.

B♭ Cl.

C Tpt.

Tbn.

Pitched Perc.

Perc.

Pno.

E.Gtr.

S Vla.

Vln. I

Vln. II

Vla.

Vc.

(15<sup>ma</sup>)

let ring

ff

mp

pp

**For perusal only**  
**visit**  
**www.chrisresswellmusic.com**  
**to purchase**

58 piccolo (sounds octave higher)

Fl.

303

*p*

*pp*

3

B♭ Cl.

*p*

3

C Tpt.

Tbn.

303

15<sup>ma</sup> let ring

*ff*

3

3

15<sup>ma</sup> let ring

3

Perc.

303

kick drum

303

*sfz* (15<sup>ma</sup>)

6

3

8

5

3

Pno.

E. Gtr.

303

S Vla.

Vln. I

Vln. II

Vla.

Vc.

303

**For perusal only**

visit

[www.chrisresswellmusic.com](http://www.chrisresswellmusic.com)

**to purchase**

Musical score for various instruments including Flute (Fl.), B♭ Clarinet (B♭ Cl.), C Trumpet (C Tpt.), Trombone (Tbn.), Pitched Percussion (Pitched Perc.), Percussion (Perc.), Piano (Pno.), Electric Guitar (E.Gtr.), Viola (S Vla.), Violin I (Vln. I), Violin II (Vln. II), Viola (Vla.), and Double Bass (Vc.).

Key performance instructions and markings include:

- Flute: *3* (trill), *3* (trill)
- B♭ Clarinet: *3* (trill)
- C Trumpet: *Mute*, *ppp*, *6* (trill)
- Piano: *8va* (octave), *3* (trill), *3* (trill), *3* (trill)
- Pitched Percussion: *15<sup>ma</sup>* (15th measure), *15<sup>ma</sup> let ring* (15th measure), *ff* (fortissimo)
- Electric Guitar: *3* (trill)
- Viola: *3* (trill)

For perusal only

visit

[www.chrisresswellmusic.com](http://www.chrisresswellmusic.com)

to purchase

flute (sounds as written)  
very quiet, supporting the resonance of the crotales

60

316

Fl.

*pp*

very quiet, supporting the resonance of the crotales

*pp*

B $\flat$  Cl.

C Tpt.

Tbn.

Pitched Perc.

(15<sup>ma</sup>)

15<sup>ma</sup>

316

Perc.

316

Pno.

316

let ring

15<sup>ma</sup>

**For perusal only**

3

*ff*

3

*mf*

**visit**

**[www.chrisresswellmusic.com](http://www.chrisresswellmusic.com)**

♭ Led. always

E.Gtr.

316

S Vla.

316

**to purchase**

Vln. I

Vln. II

Vla.

Vc.



323 Fl. *pp* 3 5 3 3

323 B♭ Cl. *ppp* 3 3 3 3

323 C Tpt. harmon mute, stem out *p* 6

323 Tbn.

323 (15<sup>ma</sup>) Pitched Perc. vibraphone *mp* 3

323 Perc. *lea*

323 (15<sup>ma</sup>) Pno. *pp* 3 3 3 3 5 3

323 E.Gtr. *pp* 3

323 S Vla.

323 Vln. I molto sul tasto very light bowing, diffuse sound *p* 3

323 Vln. II

323 Vla.

323 Vc.

For perusal only

visit

[www.chriscrewellmusic.com](http://www.chriscrewellmusic.com)

to purchase

62

Fl.

B $\flat$  Cl.

C Tpt.

Tbn.

Pitched Perc.

Perc.

Pno.

E.Gtr.

S Vla.

Vln. I

Vln. II

Vla.

Vc.

For perusal only

visit

[www.chriscrewellmusic.com](http://www.chriscrewellmusic.com)

to purchase

332

Fl.

B♭ Cl.

C Tpt.

Tbn.

Pitched Perc.

Perc.

Pno.

E.Gtr.

S Vla.

Vln. I

Vln. II

Vla.

Vc.

harmon mute, stem out

straight mute

*fp*

*f*

*fp*

*f*

*mf*

*f*

8va-----

open harmonic trill on G string  
 punta d'arco  
 molto sul pont to molto sul tasto ad lib.

**For perusal only**

**visit**

**www.chrisresswellmusic.com**

**to purchase**

64

Fl.

337

B $\flat$  Cl.

C Tpt.

337

Tbn.

Pitched Perc.

337

Perc.

337

suspended cymbal with brushes

*mp*

Pno.

337

For perusal only

visit

[www.chrisresswellmusic.com](http://www.chrisresswellmusic.com)

E.Gtr.

337

Open G harmonic 12th fret

Open G harmonic 5th fret

S Vla.

337

to purchase

Vln. I

Vln. II

Vla.

Vc.

344

Fl.

B $\flat$  Cl.

344

C Tpt.

Tbn.

Pitched Perc.

344

Perc.

344

Pno.

344

E.Gtr.

344

S Vla.

Vln. I

Vln. II

Vla.

Vc.

For perusal only

visit

[www.chrisresswellmusic.com](http://www.chrisresswellmusic.com)

to purchase

*p*

*f*

'swirl' brushes on snare drum  
to create a white noise sound  
cresc./decresc. ad lib. but always quieter than viola

Cadenza, Free

The image displays a musical score for a piece titled "Cadenza, Free". The score is arranged in a standard orchestral format with multiple staves. The instruments included are Flute (Fl.), B♭ Clarinet (B♭ Cl.), C Trumpet (C Tpt.), Trombone (Tbn.), Pitched Percussion (Pitched Perc.), Percussion (Perc.), Piano (Pno.), Electric Guitar (E.Gtr.), Saxophone (S Vla.), Violin I (Vln. I), Violin II (Vln. II), Viola (Vla.), and Cello (Vc.). The score is divided into measures, with time signatures changing from 3/4 to 4/4 and back to 3/4. The Saxophone part (S Vla.) is the only one with active notation, featuring triplets and dynamic markings like *f* and *<*. The other instruments have rests. A large red watermark is overlaid on the score, reading "For perusal only visit www.chriscrosswellmusic.com to purchase".

For perusal only

visit

[www.chriscrosswellmusic.com](http://www.chriscrosswellmusic.com)

to purchase

improvised cadenza on not  
overpressure until it becomes noise

363

Fl.

B♭ Cl.

363

C Tpt.

Tbn.

Pitched Perc.

363

Perc. kick drum (continue snare sound)

363

Pno.

363

E.Gtr.

363

S Vla. *sfppz < f sfppz < f sfppz < f* as high as possible

Vln. I *pp*

Vln. II

Vla. *pp*

Vc. *pp*

**For perusal only**

**visit**

**www.chrisresswellmusic.com**

**to purchase**

Fl.

B $\flat$  Cl.

C Tpt.

Tbn.

Pitched Perc.

Perc.

Pno.

E.Gtr.

S Vla.

Vln. I

Vln. II

Vla.

Vc.

*p*  
continue sim. gesture ad lib.  
out of sync with other strings

continue sim. gesture ad lib.  
out of sync with other strings

continue sim. gesture ad lib.  
out of sync with other strings

continue sim. gesture ad lib.  
out of sync with other strings

slowly decrease bowing pressure  
until there is almost no sound left

**For perusal only**

**visit**

**[www.chrisresswellmusic.com](http://www.chrisresswellmusic.com)**

**to purchase**